



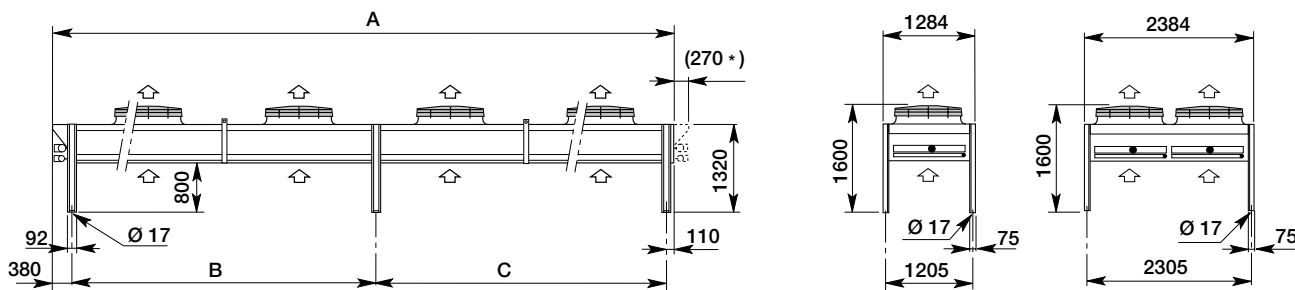
## 44 - 660 kW

| Modello                   | Type                 | EHV90F (2.1 mm)    | 340   |       | 342   |       | 344   |       | 346   |       | 348   |       |       |       |       |       |       |       |
|---------------------------|----------------------|--------------------|-------|-------|-------|-------|-------|-------|-------|-------|-------|-------|-------|-------|-------|-------|-------|-------|
| Potenza                   | Capacity             | <b>kW (ΔT 15K)</b> | 99    | 81    | 110   | 85    | 198   | 162   | 220   | 170   | 297   | 243   |       |       |       |       |       |       |
| Portata d'aria            | Air quantity         | m <sup>3</sup> /h  | 26500 | 19000 | 24500 | 17100 | 26500 | 38000 | 49000 | 34200 | 79500 | 57000 |       |       |       |       |       |       |
| Assorbimento motori       | W                    | <b>6P Ø900</b>     | 3250  | 2000  | 3250  | 2000  | 6500  | 4000  | 6500  | 4000  | 9750  | 6000  |       |       |       |       |       |       |
| Motor power consumption   | A                    |                    | 6,0   | 3,5   | 6,0   | 3,5   | 12,0  | 7,0   | 12,0  | 7,0   | 18,0  | 10,5  |       |       |       |       |       |       |
| Livello pressione sonora  | Sound pressure level | dB (A) (total)     | 58    | 51    | 58    | 51    | 60    | 53    | 60    | 53    | 62    | 55    |       |       |       |       |       |       |
| Attacchi                  | Connections          | Ø mm               | 42/35 |       | 42/35 |       | 54/42 |       | 54/42 |       | 76/54 |       |       |       |       |       |       |       |
| Circuiti                  | Circuits             | n°                 | 22    |       | 22    |       | 33    |       | 44    |       | 66    |       |       |       |       |       |       |       |
| Modello                   | Type                 | EAV9N (2.1 mm)     | 6111  |       | 6112  |       | 6121  |       | 6122  |       | 6131  |       |       |       |       |       |       |       |
| Potenza                   | Capacity             | <b>kW (ΔT 15K)</b> | 91    | 76    | 101   | 79    | 182   | 152   | 202   | 158   | 273   | 228   |       |       |       |       |       |       |
| Portata d'aria            | Air quantity         | m <sup>3</sup> /h  | 23500 | 17600 | 22000 | 16000 | 47000 | 35200 | 44000 | 32000 | 70500 | 52800 |       |       |       |       |       |       |
| Assorbimento motori       | W                    | <b>6P Ø900</b>     | 2400  | 1590  | 2400  | 1590  | 4800  | 3180  | 4800  | 3180  | 7200  | 4770  |       |       |       |       |       |       |
| Motor power consumption   | A                    |                    | 5,2   | 3     | 5,2   | 3     | 10,4  | 6     | 10,4  | 6     | 15,6  | 9     |       |       |       |       |       |       |
| Livello pressione sonora  | Sound pressure level | dB (A) (total)     | 54    | 47    | 54    | 47    | 56    | 49    | 56    | 49    | 58    | 51    |       |       |       |       |       |       |
| Attacchi                  | Connections          | Ø mm               | 35/28 |       | 35/28 |       | 54/42 |       | 54/42 |       | 76/54 |       |       |       |       |       |       |       |
| Circuiti                  | Circuits             | n°                 | 16    |       | 18    |       | 33    |       | 44    |       | 66    |       |       |       |       |       |       |       |
| Modello                   | Type                 | EAV8S (2.1 mm)     | 7111  |       | 7112  |       | 7121  |       | 7122  |       | 7131  |       |       |       |       |       |       |       |
| Potenza                   | Capacity             | <b>kW (ΔT 15K)</b> | 79    | 67    | 87    | 69    | 158   | 134   | 174   | 138   | 237   | 201   |       |       |       |       |       |       |
| Portata d'aria            | Air quantity         | m <sup>3</sup> /h  | 19300 | 14500 | 18200 | 13800 | 38600 | 29000 | 36400 | 27600 | 57900 | 43500 |       |       |       |       |       |       |
| Assorbimento motori       | W                    | <b>6P Ø800</b>     | 1700  | 1150  | 1700  | 1150  | 3400  | 2300  | 3400  | 2300  | 5100  | 3450  |       |       |       |       |       |       |
| Motor power consumption   | A                    |                    | 3,7   | 2,1   | 3,7   | 2,1   | 7,4   | 4,2   | 7,4   | 4,2   | 11,1  | 6,3   |       |       |       |       |       |       |
| Livello pressione sonora  | Sound pressure level | dB (A) (total)     | 48    | 41    | 48    | 41    | 50    | 43    | 50    | 43    | 52    | 45    |       |       |       |       |       |       |
| Attacchi                  | Connections          | Ø mm               | 35/28 |       | 35/28 |       | 54/42 |       | 54/42 |       | 76/54 |       |       |       |       |       |       |       |
| Circuiti                  | Circuits             | n°                 | 16    |       | 18    |       | 33    |       | 44    |       | 66    |       |       |       |       |       |       |       |
| Modello                   | Type                 | EAV9X (2.1 mm)     | 1110  |       | 1111  |       | 1112  |       | 1120  |       | 1121  |       | 1122  |       | 1130  |       | 1131  |       |
| Potenza                   | Capacity             | <b>kW (ΔT 15K)</b> | 60    | 50    | 70    | 55    | 71    | 55    | 120   | 100   | 140   | 110   | 142   | 110   | 180   | 150   | 210   | 165   |
| Portata d'aria            | Air quantity         | m <sup>3</sup> /h  | 16400 | 12300 | 15200 | 11100 | 14100 | 10100 | 32800 | 24600 | 30400 | 22200 | 28200 | 20200 | 49200 | 36900 | 45600 | 33300 |
| Assorbimento motori       | W                    | <b>8P Ø900</b>     | 860   | 530   | 860   | 530   | 860   | 530   | 1720  | 1060  | 1720  | 1060  | 1720  | 1060  | 2580  | 1590  | 2580  | 1590  |
| Motor power consumption   | A                    |                    | 2,2   | 1,15  | 2,2   | 1,15  | 2,2   | 1,15  | 4,4   | 2,3   | 4,4   | 2,3   | 4,4   | 2,3   | 6,6   | 3,45  | 6,6   | 3,45  |
| Livello pressione sonora  | Sound pressure level | dB (A) (total)     | 43    | 36    | 43    | 36    | 43    | 36    | 45    | 38    | 45    | 38    | 45    | 38    | 47    | 40    | 47    | 40    |
| Attacchi                  | Connections          | Ø mm               | 35/28 |       | 35/28 |       | 35/28 |       | 42/35 |       | 54/42 |       | 54/42 |       | 54/42 |       | 76/54 |       |
| Circuiti                  | Circuits             | n°                 | 15    |       | 16    |       | 18    |       | 22    |       | 33    |       | 44    |       | 44    |       | 66    |       |
| Modello                   | Type                 | EAV8T (2.1 mm)     | 8110  |       | 8111  |       | 8112  |       | 8120  |       | 8121  |       | 8122  |       | 8130  |       | 8131  |       |
| Potenza                   | Capacity             | <b>kW (ΔT 15K)</b> | 55    | 48    | 64    | 53    | 67    | 53    | 110   | 96    | 128   | 106   | 134   | 106   | 165   | 144   | 192   | 159   |
| Portata d'aria            | Air quantity         | m <sup>3</sup> /h  | 15200 | 11900 | 14200 | 10900 | 13000 | 9800  | 30400 | 23800 | 28400 | 21800 | 26000 | 19600 | 45600 | 35700 | 42600 | 32700 |
| Assorbimento motori       | W                    | <b>8P Ø800</b>     | 820   | 520   | 820   | 520   | 820   | 520   | 1640  | 1040  | 1640  | 1040  | 1640  | 1040  | 2460  | 1560  | 2460  | 1560  |
| Motor power consumption   | A                    |                    | 2,3   | 1,1   | 2,3   | 1,1   | 2,3   | 1,1   | 4,6   | 2,2   | 4,6   | 2,2   | 4,6   | 2,2   | 6,9   | 3,3   | 6,9   | 3,3   |
| Livello pressione sonora  | Sound pressure level | dB (A) (total)     | 41    | 36    | 41    | 36    | 41    | 36    | 43    | 38    | 43    | 38    | 43    | 38    | 45    | 40    | 45    | 40    |
| Attacchi                  | Connections          | Ø mm               | 35/28 |       | 35/28 |       | 35/28 |       | 42/35 |       | 54/42 |       | 54/42 |       | 54/42 |       | 76/54 |       |
| Circuiti                  | Circuits             | n°                 | 15    |       | 16    |       | 18    |       | 22    |       | 33    |       | 44    |       | 44    |       | 66    |       |
| Modello                   | Type                 | EAV9U (2.1 mm)     | 5110  |       | 5111  |       | 5120  |       | 5121  |       | 5130  |       | 5131  |       |       |       |       |       |
| Potenza                   | Capacity             | <b>kW (ΔT 15K)</b> | 44    | 37    | 48    | 38    | 88    | 74    | 96    | 76    | 132   | 111   | 144   | 114   |       |       |       |       |
| Portata d'aria            | Air quantity         | m <sup>3</sup> /h  | 10200 | 8000  | 9400  | 7200  | 20400 | 16000 | 18800 | 14400 | 30600 | 24000 | 28200 | 21600 |       |       |       |       |
| Assorbimento motori       | W                    | <b>12P Ø900</b>    | 275   | 175   | 275   | 175   | 550   | 350   | 550   | 350   | 825   | 525   | 825   | 525   |       |       |       |       |
| Motor power consumption   | A                    |                    | 0,8   | 0,4   | 0,8   | 0,4   | 1,6   | 0,8   | 1,6   | 0,8   | 2,4   | 1,2   | 2,4   | 1,2   |       |       |       |       |
| Livello pressione sonora  | Sound pressure level | dB (A) (total)     | 32    | 26    | 32    | 26    | 34    | 28    | 34    | 28    | 36    | 30    | 36    | 30    |       |       |       |       |
| Attacchi                  | Connections          | Ø mm               | 35/28 |       | 35/28 |       | 42/35 |       | 54/42 |       | 54/42 |       | 54/42 |       |       |       |       |       |
| Circuiti                  | Circuits             | n°                 | 15    |       | 16    |       | 22    |       | 33    |       | 44    |       | 33    |       |       |       |       |       |
| DATI COMUNI / COMMON DATA |                      |                    |       |       |       |       |       |       |       |       |       |       |       |       |       |       |       |       |
| Elettroventilatori        | Ø 800-900 mm x n°    |                    | 1 o   |       | 1 o   |       | 1 o   |       | 2 oo  |       | 2 oo  |       | 2 oo  |       | 3 ooo |       | 3 ooo |       |
| Fans                      | Collegamento         | Connection         | △     | ∩     | △     | ∩     | △     | ∩     | △     | ∩     | △     | ∩     | △     | ∩     | △     | ∩     | △     | ∩     |
| Superficie esterna        | External surface     | m <sup>2</sup>     | 87,5  |       | 131,3 |       | 175,1 |       | 175   |       | 262,6 |       | 350,2 |       | 262,5 |       | 393,9 |       |
| Superficie interna        | Internal surface     | m <sup>2</sup>     | 11,5  |       | 17,3  |       | 22,9  |       | 23,0  |       | 34,6  |       | 45,8  |       | 34,5  |       | 51,9  |       |
| Volume circuito           | Circuit volume       | dm <sup>3</sup>    | 15    |       | 23    |       | 29    |       | 29    |       | 44    |       | 57    |       | 44    |       | 67    |       |
| Peso                      | Weight               | kg (H)             | 218   |       | 238   |       | 254   |       | 367   |       | 412   |       | 445   |       | 523   |       | 578   |       |

# EHV Ø 900 - EAV Ø 800 - 900

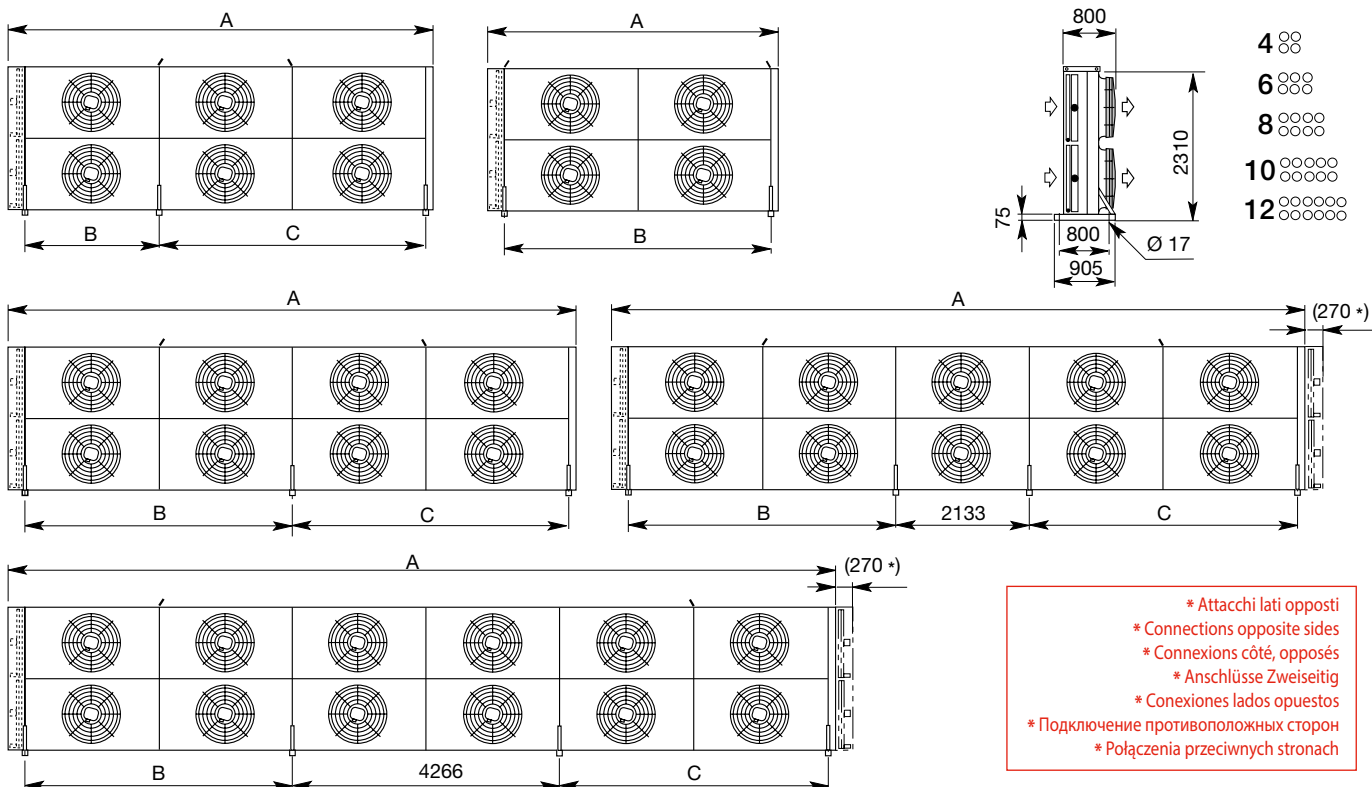
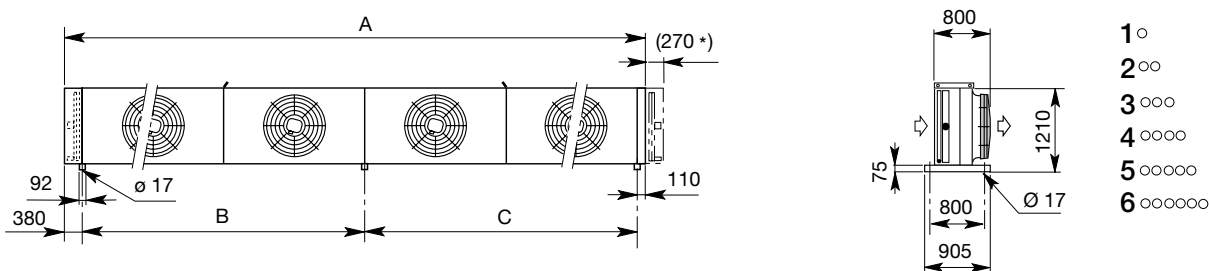
Installazione orizzontale  
Horizontal installation  
Installation horizontale  
Aufstellung horizontal  
Instalación horizontal  
Горизонтальный монтаж  
Instalacja pozioma

| Ø 800 - 900 mm x n° | 1 o  | 2 oo | 3 ooo | 4 oooo | 5 ooooo | 6 oooooo | 4 oo | 6 ooo | 8 ooooo | 10 oooooo | 12 oooooo |
|---------------------|------|------|-------|--------|---------|----------|------|-------|---------|-----------|-----------|
| (H) A mm            | 2623 | 4756 | 6889  | 9022   | 11155   | 13288    | 4756 | 6889  | 9022    | 11155     | 13288     |
| B mm                | 2133 | 4266 | 6399  | 4266   | 4266    | 6399     | 4266 | 6399  | 4266    | 4266      | 6399      |
| C mm                | —    | —    | —     | 4266   | 6399    | 6399     | —    | —     | 4266    | 6399      | 6399      |



Installazione verticale  
Vertical installation  
Installation verticale  
Aufstellung vertikal  
Instalación vertical  
Вертикальный монтаж  
Instalacja pionowa

| Ø 800 - 900 mm x n° | 1 o  | 2 oo | 3 ooo | 4 oooo | 5 ooooo | 6 oooooo | 4 oo | 6 ooo | 8 ooooo | 10 oooooo | 12 oooooo |
|---------------------|------|------|-------|--------|---------|----------|------|-------|---------|-----------|-----------|
| (M) A mm            | 2623 | 4756 | 6889  | 9022   | 11155   | 13288    | 4756 | 6889  | 9022    | 11155     | 13288     |
| B mm                | 2133 | 4266 | 6399  | 4266   | 4266    | 6399     | 4266 | 2133  | 4266    | 4266      | 4266      |
| C mm                | —    | —    | —     | 4266   | 6399    | 6399     | —    | 4266  | 4266    | 4266      | 4266      |



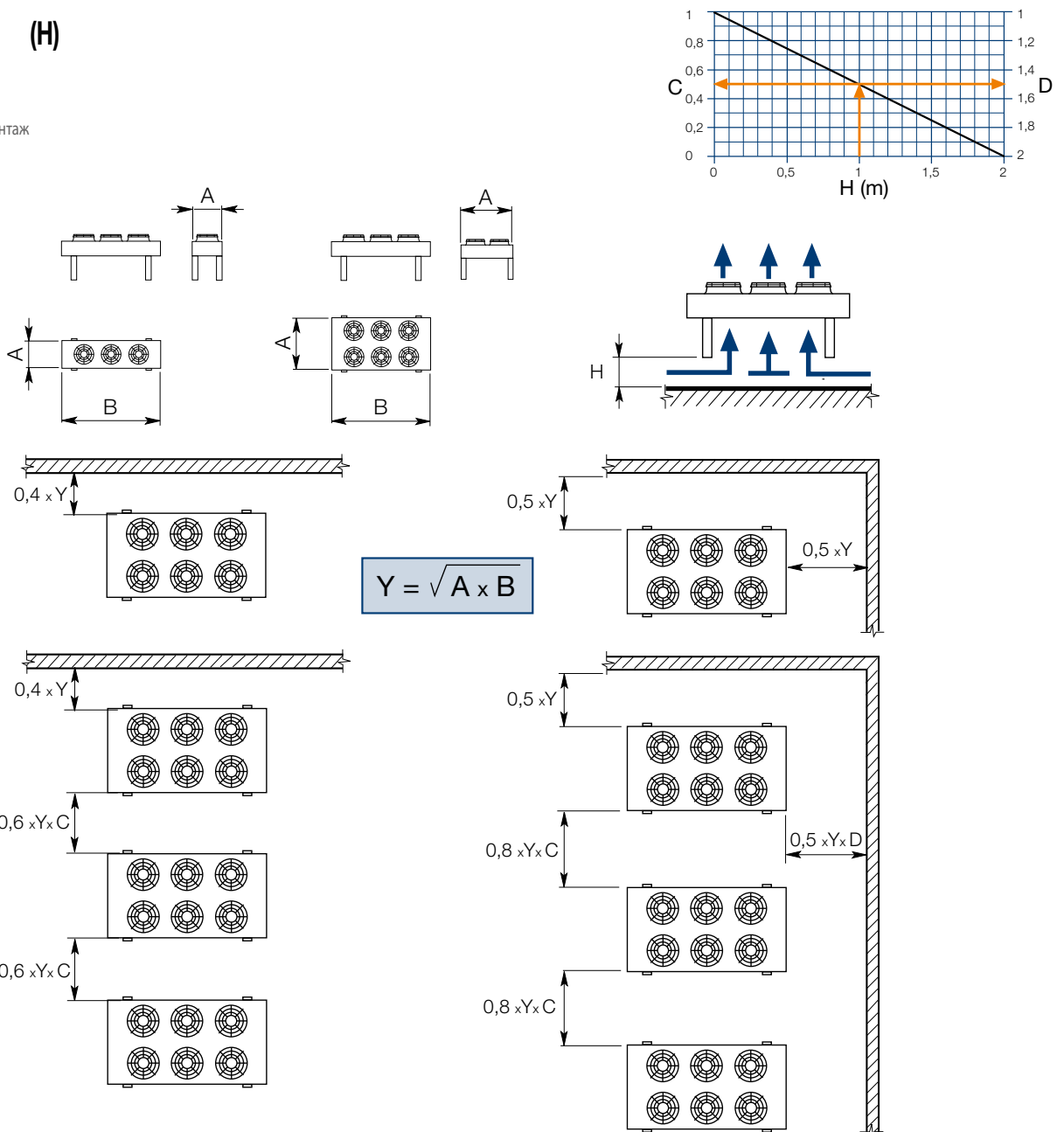
\* Attacchi lati opposti  
\* Connections opposite sides  
\* Connexions côté, opposés  
\* Anschlüsse Zweiseitig  
\* Conexiones lados opuestos  
\* Подключение противоположных сторон  
\* Połączenia przeciwnych stronach

# Ø 300 - 350 - 500 - 630 - 710 - 800 - 900 - 1000

Guida distanze/Distances guide/Guide distances/Entfernungen Anleitung/Guía de distancias/Рекомендуемые расстояния/Minimalne odległości montażowe

Installazione orizzontale  
Horizontal installation  
Installation horizontale  
Aufstellung horizontal  
Instalación horizontal  
Горизонтальный монтаж  
Instalacja pozioma

(H)

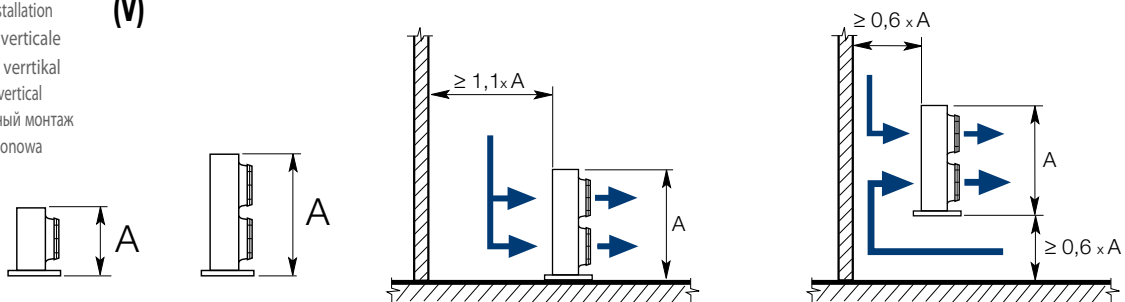


# Ø 300 - 350 - 500 - 630 - 710 - 800 - 900 - 1000

Guida distanze/Distances guide/Guide distances/Entfernungen Anleitung/Guía de distancias/Рекомендуемые расстояния/Minimalne odległości montażowe

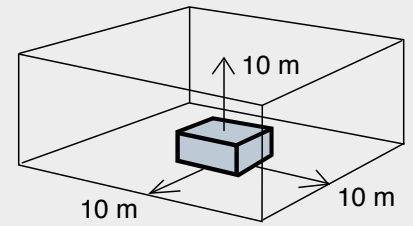
Installazione verticale  
Vertical installation  
Installation verticale  
Aufstellung vertikal  
Instalación vertical  
Вертикальный монтаж  
Instalacja pionowa

(M)



**Livello pressione sonora / Sound pressure level / Niveau pression sonore / Schalldruckpegel**  
**Nivel de presión sonora / Уровень звуковой мощности / Poziom mocy akustycznej**

Livello pressione sonora sulla superficie del parallelepipedo indicato, con piano riflettente.  
 Sound pressure level on the indicated parallelepiped surface, with reflective plane.  
 Niveau pression sonore sur la surface du parallelepède indiquè, avec plan réfléchissant.  
 Schalldruckpegel auf die gezeigte quaderförmige Hüllfläche, mit reflektierender Ebene.  
 Nivel de presión sonora sobre las superficies del paralelepèdo indicadas, con plano reflectante.  
 Уровень звукового давления на поверхности указанного параллелипипеда с отражающими плоскостями.  
 Poziom ciśnienia akustycznego na powierzchni prostopadłościanu, z dolną płaszczyzną odbijającą.



**Livello potenza sonora / Sound power level / Niveau puissance sonore / Schalleistungspegel**  
**Nivel de potencia sonora / Уровень звуковой мощности / Poziom mocy akustycznej**

Livello potenza sonora riferita ad un ventilatore  
 Single fan sound power level  
 Niveau puissance sonore se réfère à un seul ventilateur  
 Schalleistungspegel für einen Ventilator

Nivel de potencia sonora para un solo ventilador  
 Уровень звуковой мощности для одного вентилятора  
 Poziom mocy akustycznej odnosi się do jednego wentylatora

|                       |  | Ø 300 SAV     |    | Ø 350 SHV     |    | Ø 500 SAV   |    |             |    |             |    |            |    |            |    |            |    |            |  |
|-----------------------|--|---------------|----|---------------|----|-------------|----|-------------|----|-------------|----|------------|----|------------|----|------------|----|------------|--|
|                       |  | EC (1595 RPM) |    | AC (1350 RPM) |    | 4P          |    | 6P          |    | 4P          |    | 6P         |    | 8P         |    |            |    |            |  |
| Poli Подключение      | Poles Poles Pôles Polig Polos                        | △ ▽           |    | △ ▽           |    | △ ▽         |    | △ ▽         |    | △ ▽         |    | △ ▽        |    | △ ▽        |    |            |    |            |  |
| Collegamento Conexión | Connection Подключение Connexion Anschluß Połączenie | dB(A) Tot.    |    | dB(A) 63Hz    |    | dB(A) 125Hz |    | dB(A) 250Hz |    | dB(A) 500Hz |    | dB(A) 1kHz |    | dB(A) 2kHz |    | dB(A) 4kHz |    | dB(A) 8kHz |  |
|                       | Frequenza del centro di banda d'ottava               | 68            | 66 | 71            | 61 | 79          | 75 | 69          | 65 | 61          | 56 | 48         | 43 | 36         | 29 |            |    |            |  |
|                       | Octave band centre frequency                         | 30            | 24 | 40            | 33 | 44          | 45 | 43          | 40 | 40          | 33 | 44         | 45 | 43         | 40 | 40         | 33 |            |  |
|                       | Fréquence de centre de bande d'octave                | 50            | 45 | 59            | 51 | 60          | 62 | 55          | 47 | 44          | 44 | 55         | 47 | 44         | 44 |            |    |            |  |
|                       | Oktav-Mittelfrequenzband                             | 52            | 50 | 61            | 58 | 68          | 62 | 57          | 56 | 50          | 45 | 50         | 45 | 50         | 45 |            |    |            |  |
|                       | Frecuencia del centro de banda de octavas            | 62            | 61 | 64            | 55 | 73          | 68 | 62          | 59 | 55          | 50 | 62         | 59 | 55         | 50 |            |    |            |  |
|                       | Частоты в источнике                                  | 65            | 61 | 69            | 53 | 75          | 71 | 65          | 61 | 56          | 52 | 62         | 59 | 56         | 51 |            |    |            |  |
|                       | Czesotliwość środka pasma oktawy                     | 62            | 60 | 62            | 47 | 72          | 67 | 62          | 59 | 56          | 51 | 62         | 59 | 56         | 51 |            |    |            |  |
|                       |  | 56            | 57 | 57            | 38 | 71          | 66 | 59          | 54 | 48          | 43 | 59         | 54 | 48         | 43 |            |    |            |  |
|                       |  | 46            | 46 | 49            | 28 | 64          | 58 | 48          | 43 | 36          | 29 | 64         | 58 | 48         | 43 | 36         | 29 |            |  |

|                       |  | Ø 500 EAV  |    |            |    |             |    | Ø 630 EAV - Ø 630 SAV |    |             |    |            |    | Ø 710 SAV  |    |            |    |            |  |
|-----------------------|--|------------|----|------------|----|-------------|----|-----------------------|----|-------------|----|------------|----|------------|----|------------|----|------------|--|
|                       |  | 4P         |    | 6P         |    | 8P          |    | 4P                    |    | 6P          |    | 8P         |    | 12P        |    | 6P         |    |            |  |
| Poli Подключение      | Poles Poles Pôles Polig Polos                        | △ ▽        |    | △ ▽        |    | △ ▽         |    | △ ▽                   |    | △ ▽         |    | △ ▽        |    | △ ▽        |    | △ ▽        |    |            |  |
| Collegamento Conexión | Connection Подключение Connexion Anschluß Połączenie | dB(A) Tot. |    | dB(A) 63Hz |    | dB(A) 125Hz |    | dB(A) 250Hz           |    | dB(A) 500Hz |    | dB(A) 1kHz |    | dB(A) 2kHz |    | dB(A) 4kHz |    | dB(A) 8kHz |  |
|                       | Frequenza del centro di banda d'ottava               | 80         | 76 | 69         | 66 | 61          | 57 | 87                    | 80 | 74          | 68 | 66         | 59 | 55         | 48 | 77         | 71 |            |  |
|                       | Octave band centre frequency                         | 43         | 46 | 43         | 40 | 40          | 32 | 48                    | 50 | 48          | 42 | 44         | 34 | 36         | 28 | 48         | 49 |            |  |
|                       | Fréquence de centre de bande d'octave                | 58         | 64 | 55         | 47 | 44          | 44 | 48                    | 50 | 48          | 42 | 44         | 34 | 44         | 35 | 59         | 53 |            |  |
|                       | Oktav-Mittelfrequenzband                             | 68         | 62 | 57         | 56 | 50          | 46 | 75                    | 67 | 61          | 58 | 56         | 49 | 48         | 42 | 71         | 59 |            |  |
|                       | Frecuencia del centro de banda de octavas            | 74         | 68 | 62         | 60 | 55          | 50 | 78                    | 73 | 69          | 63 | 62         | 54 | 50         | 43 | 71         | 66 |            |  |
|                       | Частоты в источнике                                  | 77         | 72 | 65         | 61 | 56          | 53 | 84                    | 77 | 70          | 63 | 60         | 55 | 51         | 44 | 72         | 66 |            |  |
|                       | Czesotliwość środka pasma oktawy                     | 72         | 68 | 62         | 60 | 56          | 52 | 80                    | 73 | 66          | 59 | 56         | 49 | 45         | 36 | 68         | 64 |            |  |
|                       |  | 70         | 66 | 59         | 54 | 48          | 43 | 73                    | 66 | 59          | 51 | 49         | 41 | 35         | 27 | 63         | 55 |            |  |
|                       |  | 64         | 57 | 48         | 43 | 36          | 29 | 66                    | 59 | 55          | 48 | 45         | 37 | 35         | 36 | 58         | 51 |            |  |

|                       |  | Ø 800 SAV  |    | Ø 800 EAV  |    | Ø 900 EHV   |    | Ø 900 EAV   |    |             | Ø 900 XAV |            |    |            | Ø 1000 XAV |            |    |            |    |            |    |             |    |    |
|-----------------------|--|------------|----|------------|----|-------------|----|-------------|----|-------------|-----------|------------|----|------------|------------|------------|----|------------|----|------------|----|-------------|----|----|
|                       |  | 6P         |    | 8P         |    | 6P(F)       |    | 6P          |    | 8P          |           | 12P        |    | 4P         |            | 6P         |    | 8P         |    | 12P        |    | 6P          |    |    |
| Poli Подключение      | Poles Poles Pôles Polig Polos                        | △ ▽        |    | △ ▽        |    | △ ▽         |    | △ ▽         |    | △ ▽         |           | △ ▽        |    | △ ▽        |            | △ ▽        |    | △ ▽        |    | △ ▽        |    | △ ▽         |    |    |
| Collegamento Conexión | Connection Подключение Connexion Anschluß Połączenie | dB(A) Tot. |    | dB(A) 63Hz |    | dB(A) 125Hz |    | dB(A) 250Hz |    | dB(A) 500Hz |           | dB(A) 1kHz |    | dB(A) 2kHz |            | dB(A) 4kHz |    | dB(A) 8kHz |    | dB(A) 63Hz |    | dB(A) 125Hz |    |    |
|                       | Frequenza del centro di banda d'ottava               | 79         | 73 | 73         | 67 | 79          | 72 | 67          | 89 | 82          | 85        | 78         | 74 | 67         | 63         | 57         | 93 | 84         | 85 | 77         | 74 | 66          | 63 | 57 |
|                       | Octave band centre frequency                         | 53         | 51 | 50         | 46 | 53          | 51 | 50          | 46 | 54          | 55        | 60         | 48 | 58         | 44         | 37         | 29 | 60         | 58 | 60         | 47 | 58          | 43 | 37 |
|                       | Fréquence de centre de bande d'octave                | 59         | 52 | 52         | 51 | 59          | 52 | 52          | 51 | 68          | 58        | 64         | 58 | 59         | 52         | 52         | 44 | 75         | 68 | 64         | 57 | 59          | 51 | 52 |
|                       | Oktav-Mittelfrequenzband                             | 68         | 60 | 61         | 55 | 68          | 60 | 61          | 55 | 80          | 65        | 72         | 64 | 64         | 57         | 52         | 46 | 80         | 74 | 72         | 63 | 64          | 56 | 52 |
|                       | Frecuencia del centro de banda de octavas            | 73         | 66 | 67         | 62 | 73          | 65 | 66          | 62 | 81          | 75        | 79         | 73 | 69         | 61         | 57         | 52 | 87         | 79 | 79         | 72 | 69          | 60 | 57 |
|                       | Частоты в источнике                                  | 76         | 69 | 69         | 63 | 76          | 68 | 68          | 63 | 83          | 77        | 81         | 75 | 69         | 62         | 59         | 53 | 88         | 80 | 81         | 74 | 69          | 61 | 59 |
|                       | Czesotliwość środka pasma oktawy                     | 73         | 67 | 65         | 59 | 73          | 66 | 65          | 59 | 84          | 77        | 79         | 71 | 67         | 61         | 56         | 49 | 88         | 78 | 79         | 70 | 67          | 60 | 56 |
|                       |  | 66         | 58 | 58         | 53 | 66          | 58 | 58          | 53 | 81          | 73        | 73         | 65 | 59         | 55         | 50         | 41 | 81         | 73 | 73         | 64 | 59          | 54 | 50 |
|                       |  | 61         | 53 | 55         | 48 | 61          | 53 | 54          | 48 | 75          | 63        | 67         | 60 | 54         | 46         | 40         | 34 | 78         | 68 | 67         | 59 | 54          | 45 | 40 |

**Dati elettrici di targa dei ventilatori 400V-3PH-50Hz**  
 Questi dati, cui vanno aggiunte le tolleranze di norma, rappresentano i valori massimi di assorbimento nelle condizioni di esercizio più gravose e rappresentano i riferimenti per l'abbinamento di componenti elettrici non forniti da LU-VE.

**Capacity plate of 400V-3PH-50Hz fans**  
 These data, to which the standard allowances have to be added, are the maximum absorption values under the hardest operation conditions and serve as references to couple the electrical components which are not supplied by LU-VE.

**Informations électriques indiquées sur la plaque des ventilateurs: 400V-3PH-50Hz**  
 Ces données, auxquelles seront ajoutées les tolérances de la norme, représentent les valeurs maximales d'absorption dans les conditions de fonctionnement les plus difficiles et servent de référence pour le couplage des composants électriques non fournis par LU-VE.

**Elektrische Daten auf dem Typenschild der Ventilatoren 400V-3PH-50Hz**  
 Diesen Daten sind die Normtolleranzen hinzuzufügen. Sie stellen die max. Aufnahmewerte bei extremen Betriebsbedingungen dar und dienen als Bezug für die Gruppierung mit Komponenten.

|          | Ø 500 SAV - EAV |      |      |      |     |      | Ø 630 SAV - EAV |      |      |      |      |      | Ø 710 SAV |     | Ø 800 SAV - EAV |      |      |      | Ø 900 EHV |      |       |      |
|----------|-----------------|------|------|------|-----|------|-----------------|------|------|------|------|------|-----------|-----|-----------------|------|------|------|-----------|------|-------|------|
|          | 4P              |      | 6P   |      | 8P  |      | 4P              |      | 6P   |      | 8P   |      | 12P       |     | 6P              |      | 6P   |      | 8P        |      | 6P(F) |      |
|          | △               | ▽    | △    | ▽    | △   | ▽    | △               | ▽    | △    | ▽    | △    | ▽    | △         | ▽   | △               | ▽    | △    | ▽    | △         | ▽    | △     | ▽    |
| <b>W</b> | 720             | 550  | 270  | 190  | 130 | 80   | 1940            | 1290 | 600  | 400  | 330  | 190  | 110       | 60  | 840             | 530  | 2000 | 1270 | 980       | 570  | 3300  | 1900 |
| <b>A</b> | 1,41            | 0,95 | 0,69 | 0,40 | 0,3 | 0,15 | 3,40            | 2,00 | 1,23 | 0,73 | 0,83 | 0,39 | 0,3       | 0,2 | 1,74            | 0,94 | 4,3  | 2,5  | 2,41      | 1,21 | 6,30  | 3,50 |

Correzione livello pressione sonora per distanza diversa da 10 m.  
 Sound pressure level correction for other than 10 m.  
 Correction niveau pression sonore pour distance différent de 10 m.  
 Pegeländerung für andere Entfernungen als 10 m.  
 Corrección de presión Sonora para distancias diferentes de 10 m.  
 Уровень звукового давления на расстоянии 10 м.  
 Współczynniki korekcyjne ciśnienia akustycznego dla odległości innej niż 10 m.

Ø 500 - 630 - 710

|        |    |     |     |    |    |      |      |     |     |     |     |
|--------|----|-----|-----|----|----|------|------|-----|-----|-----|-----|
| m      | 2  | 3   | 5   | 10 | 15 | 20   | 30   | 40  | 60  | 80  | 100 |
| dB (A) | 12 | 9,5 | 5,5 | 0  | -3 | -5,5 | -8,5 | -11 | -14 | -16 | -18 |

Ø 800 - 900 - 1000

|        |    |   |   |    |    |      |      |     |     |     |     |
|--------|----|---|---|----|----|------|------|-----|-----|-----|-----|
| m      | 2  | 3 | 5 | 10 | 15 | 20   | 30   | 40  | 60  | 80  | 100 |
| dB (A) | 10 | 8 | 5 | 0  | -3 | -5,5 | -8,5 | -11 | -14 | -16 | -18 |

Aumento del livello potenza sonora in funzione del numero dei ventilatori.

Sound power level increasing according to fan number.

Augmentation du niveau puissance sonore selon le nombre des ventilateurs.

Schalleistungspegel in Abhängigkeit von der Ventilatoranzahl.

El nivel de potencia sonora aumenta en función del número de ventiladores.

Увеличение уровня звуковой мощности в зависимости от количества вентиляторов.

Wzrost poziomu mocy akustycznej w zależności od ilości wentylatorów.

Ø 500 - 630 - 800 - 900 - 1000

| Ø N°   | 1 | 2  | 3  | 4  | 5  | 6  | 8  | 10  | 12  | 14  | 16  |
|--------|---|----|----|----|----|----|----|-----|-----|-----|-----|
| dB (A) | 0 | +3 | +5 | +6 | +7 | +8 | +9 | +10 | +11 | +12 | +12 |

I livelli di potenza sonora sono stati provati secondo la norma EN 13487.

Sound power levels are tested according to EN 13487.

Les niveaux de puissance acoustique sont éprouvés selon la norme EN 13487.

Die Schalleistungspegel sind nach EN 13487 Norm geprüft.

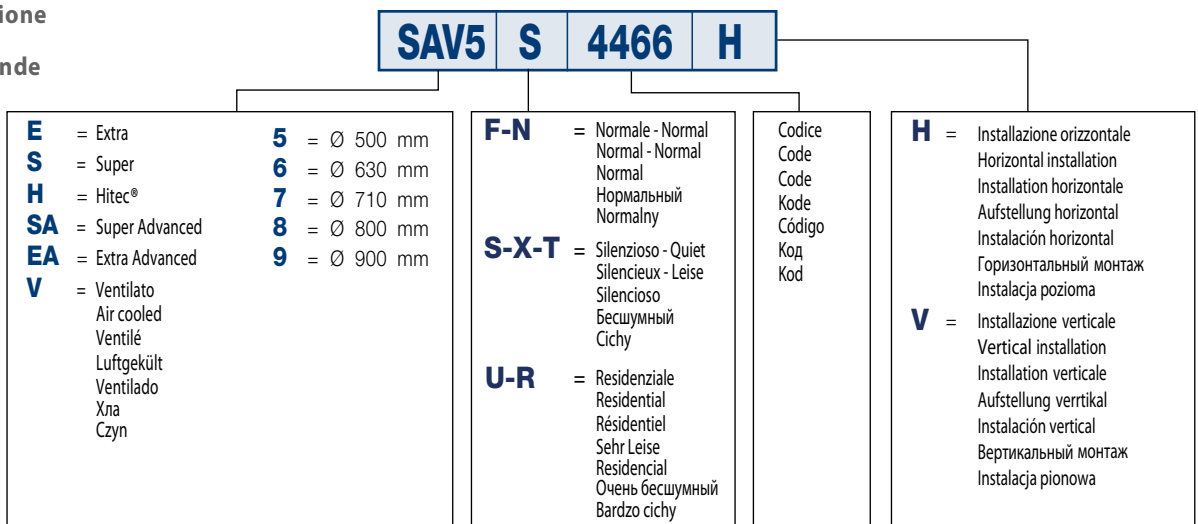
Nivel de potencia Sonora comprobado de acuerdo con la norma EN 13487.

Уровни звуковой мощности проверены согласно нормативам EN 13487.

Pomiary poziomu mocy akustycznej zostały wykonane według normy EN 13487.



Esempio di ordinazione  
 Ordering example  
 Exemple de commande  
 Typenschlüssel  
 Ejemplo de pedido  
 Пример заказа  
 Nomenclatura



Datos de placa ventiladores de 400-3ph-50Hz

Estos datos deben sumarse a los valores indicados como standard, y son los valores máximos de consumo bajo las condiciones más agresivas, y sirven como referencia para calcular las otras componentes eléctricas que no sean suministradas por LU-VE.

Характеристики с этикетки двигателей 400V- 3PH- 50HZ

Эти данные, принимают в расчёт нормативный запас отклонения, указывают макс. значения энерг. расхода при самых тяжёлых условиях работы и являются ссылкой для подбора электрических компонентов не поставляемых фирмой LU-VE.

Dane elektryczne dla wentylatorów 400V-3F-50Hz

Aby uzyskać wartości maksymalne poboru mocy, należy do poniższych wartości, dodać wyspecyfikowane w normach wskaźniki tolerancji. Wartości maksymalne występują w szczególności trudnych warunkach pracy po zastosowaniu komponentów nie występujących w produktach LU-VE.

| Ø 900 EAV - XAV |      |      |      | Ø 900 XAV |      | Ø 1000 XAV |      |      |      |
|-----------------|------|------|------|-----------|------|------------|------|------|------|
| 6P              |      | 8P   |      | 12P       |      | 4P         |      | 6P   |      |
| △               | ∩    | △    | ∩    | △         | ∩    | △          | ∩    | △    | ∩    |
| 2450            | 1500 | 1110 | 680  | 310       | 190  | 5200       | 3000 | 2480 | 1820 |
| 5,20            | 2,90 | 2,70 | 1,36 | 0,83      | 0,39 | 8,70       | 5,00 | 5,63 | 3,42 |